

LOAD BUILDER AND OPTIMIZER

Create the **largest** possible, **lowest cost** shipments for all your freight.



Build Loads. Consolidate Shipments. Optimize Routes.

Building the perfect load is a challenge. There are countless factors to take into consideration such as delivery date, location, class, weight and size. Weighing all of these factors without the help of technology usually results in missed opportunities and wasted resources. Instead of pouring through spreadsheets and manually grouping orders onto a single truck, Kuebix's Load Builder and Optimizer can be leveraged to help logistics teams build and optimize the perfect load every time.

Load Builder

With the Load Builder, the router or scheduler can view all unscheduled orders in an intuitive portal. By filtering by route, warehouse, order type, commodity group, date for delivery, account, order source or even pooling location, they can build a load with the parameters of their choosing. The router or scheduler simply drags and drops orders into the truck builder and the system updates the truck's specifications.

Optimizer

For supercharged time-savings, the Kuebix Optimizer can be added to the Load Builder to automate this entire process. Users set the parameters for the truck they want to build, adding in LTL constraints, specifying single stop, pickup and delivery date, maximum capacity, or unit of measure for example. Once the parameters are set, Kuebix's technology optimizes all orders into trucks for the user to review and accept.

Drop Orders For Compartment 1

Drop Orders For Compartment 2

Drop Orders For Compartment 3

View Map

Bulk Trailer

Pallets: 0

Cube: 0

Weight: 0

Miles: 0

Stop #	Stop Date	Stop Type	Orders	Account	Location
Shipment legs will be calculated from orders.					
<input type="checkbox"/> Select All <input type="button" value="Create Shipment"/> <input type="button" value="Cancel Selected"/> <input type="button" value="Map All"/>					

Route Summary

34,663 lbs - 10 pits - 0 cube

1,263 miles - 0-0 F

Pickup Locations

Goose Creek, SC - 12/14/18

Delivery Locations

PEORIA, IL - 12/15/18

MILWAUKEE, WI - 12/15/18

Deperre, WI - 12/15/18

Job #: 197887

Drag to Load Builder

Create Shipment

Route Summary

30,262 lbs - 10 pits - 0 cube

1,112 miles - 0-0 F

Pickup Locations

Goose Creek, SC - 12/14/18

Delivery Locations

Ashland, OH - 12/15/18

JACKSON, MI - 12/15/18

LAKE VILLA, IL - 12/15/18

Job #: 197887

Drag to Load Builder

Create Shipment

Route Summary

38,265 lbs - 14 pits - 0 cube

607 miles - 0-0 F

Pickup Locations

Goose Creek, SC - 12/14/18

Delivery Locations

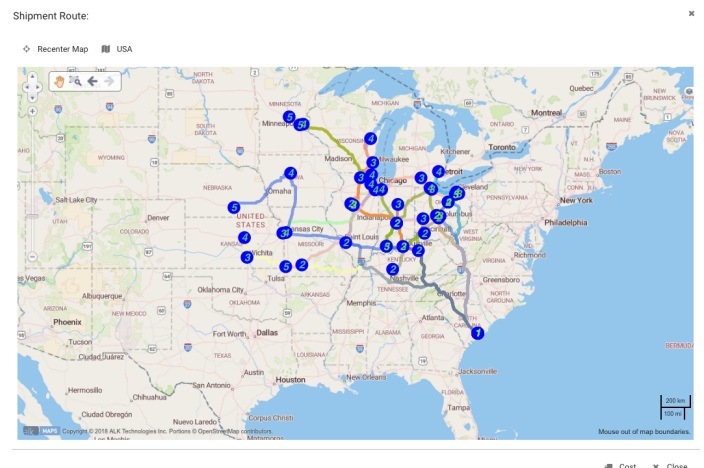
LEXINGTON, KY - 12/14/18

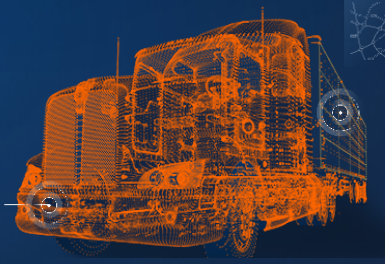
JEFFERSONVILLE, IN - 12/15/18

Job #: 197887

Drag to Load Builder

Create Shipment





LOAD BUILDER AND OPTIMIZER

Create the **largest** possible, **lowest cost** shipments for all your freight.

Key Features

- Drag and drop orders to **easily build shipments**
- **Customize load specifications** like pallet count, weight, miles
- Plan for trailers that have **multiple compartments**
- View routes on an **interactive map** at any time
- **Consolidate shipments** by filtering by parameters
- **Get alerts** if errors such as maximum weight is exceeded
- Compare cost pre-consolidation and cost post-consolidation to **report on savings**

Advantages

- **Save time** by comparing the most cost-effective and optimized loads and routes
- **Manage** first mile, final mile and pool distribution shipments
- **Gain complete control** over load consolidation and optimization
- **Never miss out on an opportunity** to save money or time when building loads
- **Stay flexible** by manually adding in spot rates when needed
- **Plan** loads and routes with transparency in an organized way
- **Customize** pricing analytics to understand your total savings

